

320-842-9173

*Office Supplies*

*Copying Services*

**BackStreet Printing**  
and Office Supplies

*School Supplies*

*Custom Cards*

*Posters*

1200 Atlantic Ave. Benson [www.backstreetprinting.com](http://www.backstreetprinting.com)

*You've Given Your Best To Grow It  
Expect No Less To Protect It.*

## Boraas Crop Insurance

*Insuring farmers in Minnesota and South Dakota*

Mark Boraas, Agent  
Deb Boraas, Agent  
3036 300th Street  
Appleton, MN 56208

Office 320-752-4545  
Toll Free 877-752-4545  
Fax 320-752-4510  
Cellular 500-845-3784

*The Very Best in Crop Insurance*

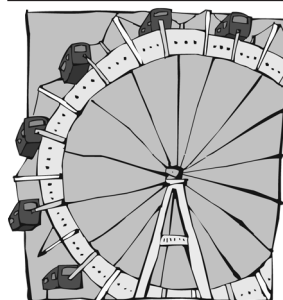
OFF SALE LIQUOR

Ph 289-2290

*Fine Wine • Good Beer  
Great Customer Service*

## HOUSE OF SPIRITS

240 West Snelling Avenue • APPLETON, MN  
Hours: Mon. to Sat. • 10:00 a.m. to 10:00 p.m.



## Crescent City Amusements

On the  
Midway

Advance Ride Tickets Available!



## Kevin M. Johnson & Sons Inc.

Local & Long Distance Hauling  
320-289-1523



Office 320-289-0311  
Cell 320-297-0132  
133 N Miles Street,  
Appleton, MN

VINYL • CLOTHING • NOVELTIES

## Zniewski Funeral Home

— Complete Funeral & Cremation Services —  
Benson, Minnesota  
320-842-8811

## Zniewski Funeral Home

— Vaala Chapel —  
Appleton, Minnesota  
320-289-1000

Greg Zniewski — Jim Vaala — Jeremy Abrego



## Appleton Veterinary Clinic

Rachel M. Gosney DVM

24 hour emergency service  
Monday-Friday 8am-5p.m. Saturday 8am-Noon

50 W Sorenson Ave  
Appleton, MN 56208

Ph 320-289-2484  
Fax 320-289-2403